

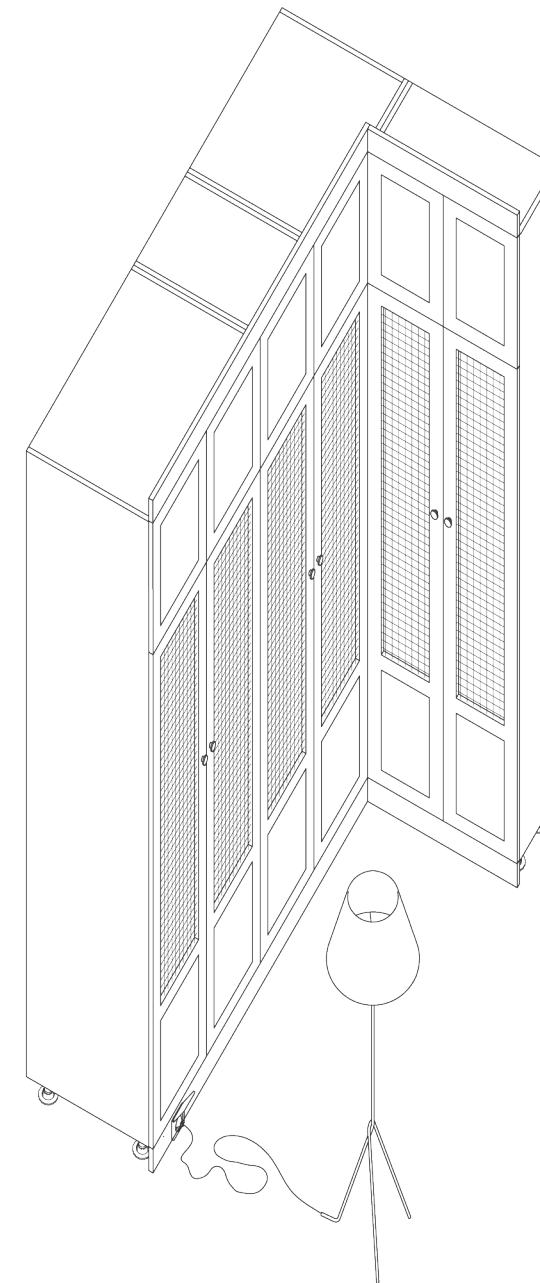
mniratelier.com

mail@mniratelier.com
Lisbon, Portugal

TECHNICAL BOOKLET

J&M APARTMENT WARDROBE

Design by studio AMBITS [PT]



PRODUCTION
2023





DESCRIPTION

- A discreet wardrobe in the entrance hall embraces the welcome area.

CREDITS

- Carpentry and engineering by MNIR.
- Design concept by studio AMBITS / ambits.pt
- Photography by Aleksandra Matyas / almahstudio.com

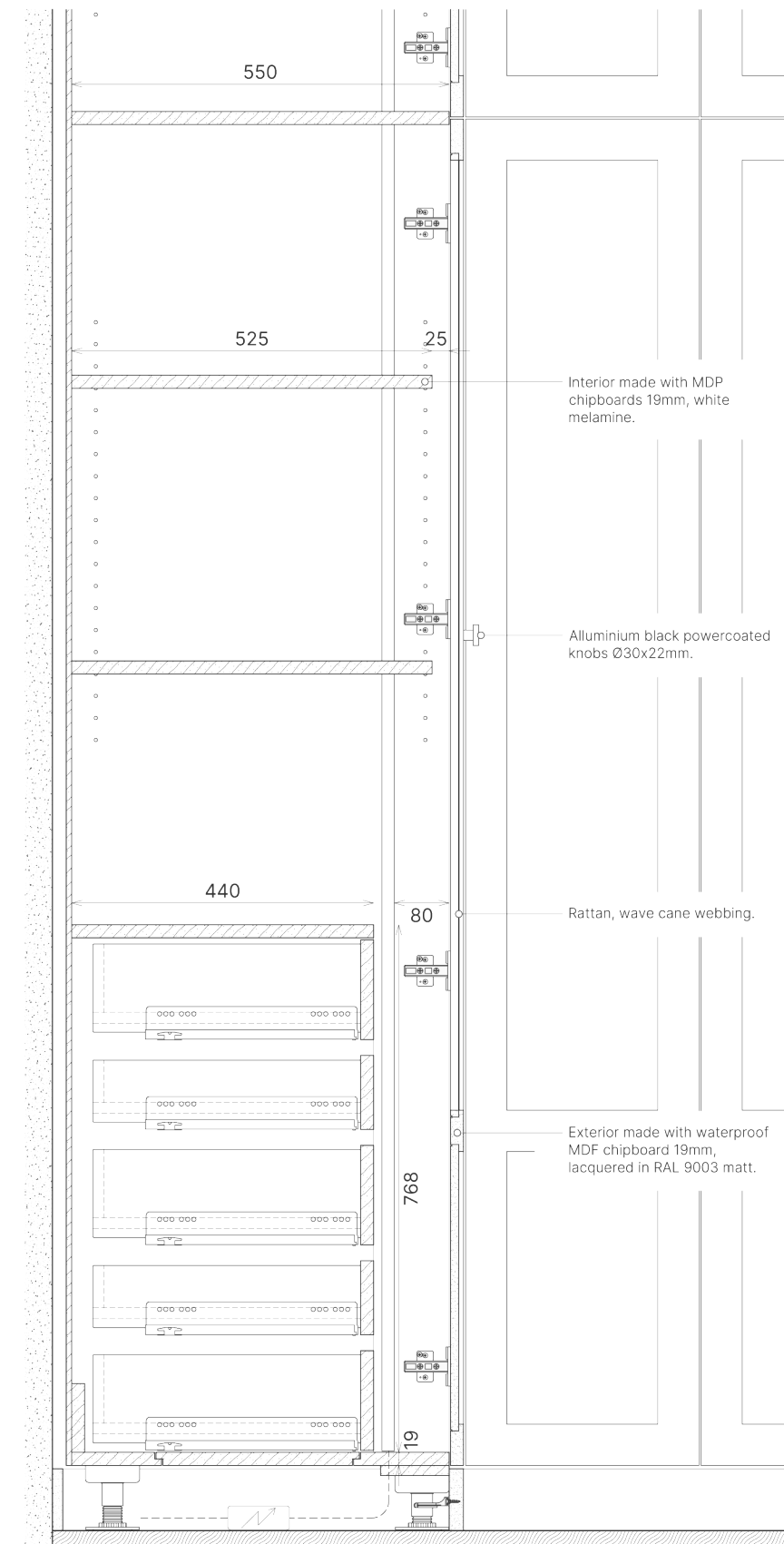
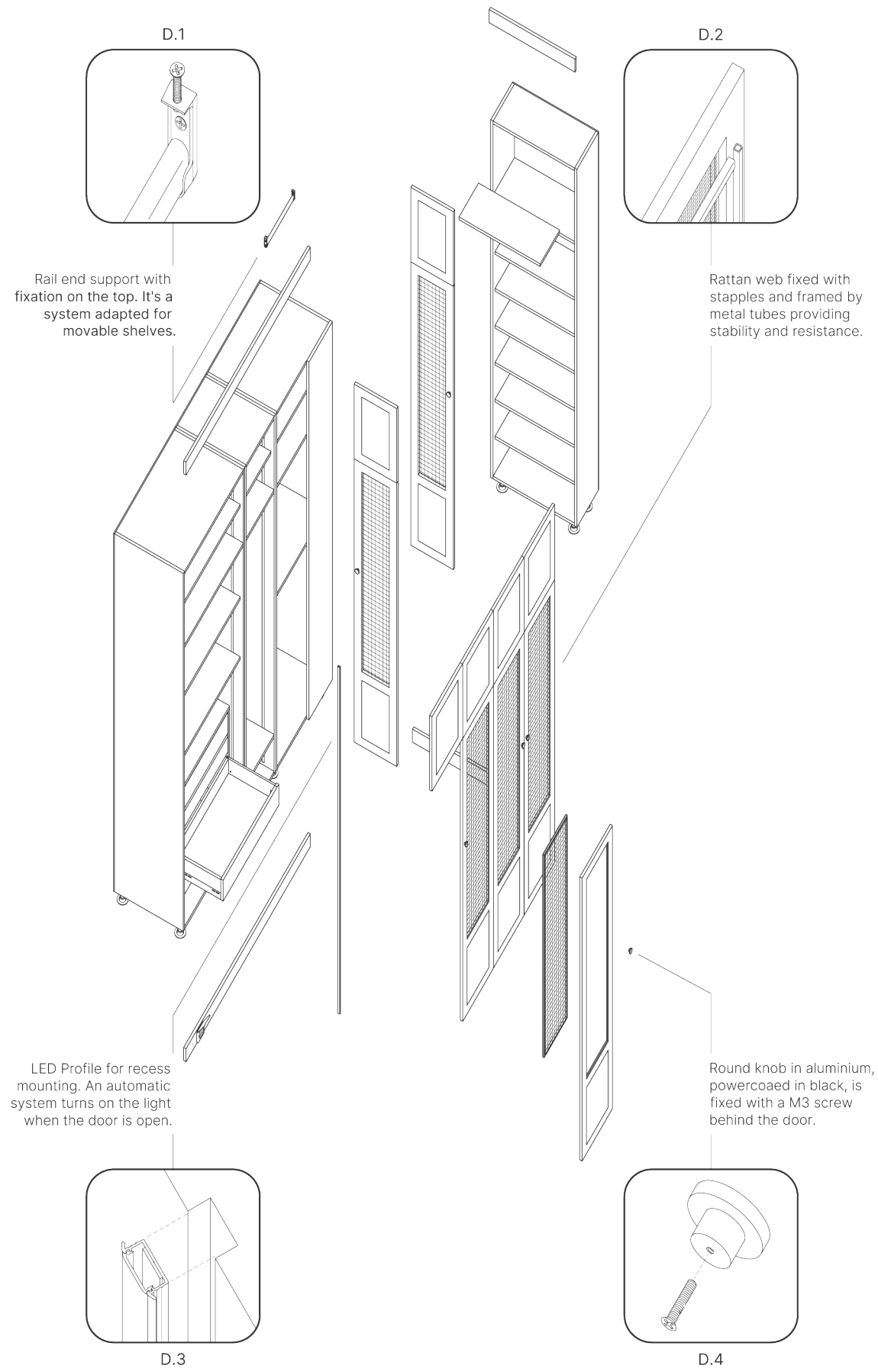
FITTINGS

- x30 | 70T3550.TL | Blum clip top concealed hinges 110°
- x6 | 70T9550.TL | Blum clip top concealed hinges 90°
- x16 | 637.76.351 | Hafele AXILO 78 feet 60mm
- x16 | 637.76.333 | Hafele AXILO 78 mounting plate with screw
- x6 | 356.04.303 | Hafele Tip-on with magnet black
- x6 | 803.32.721 | Hafele Rail end support
- x1 | 801.40.013 | Hafele Wardrobe rail, OVA 30x15 mm

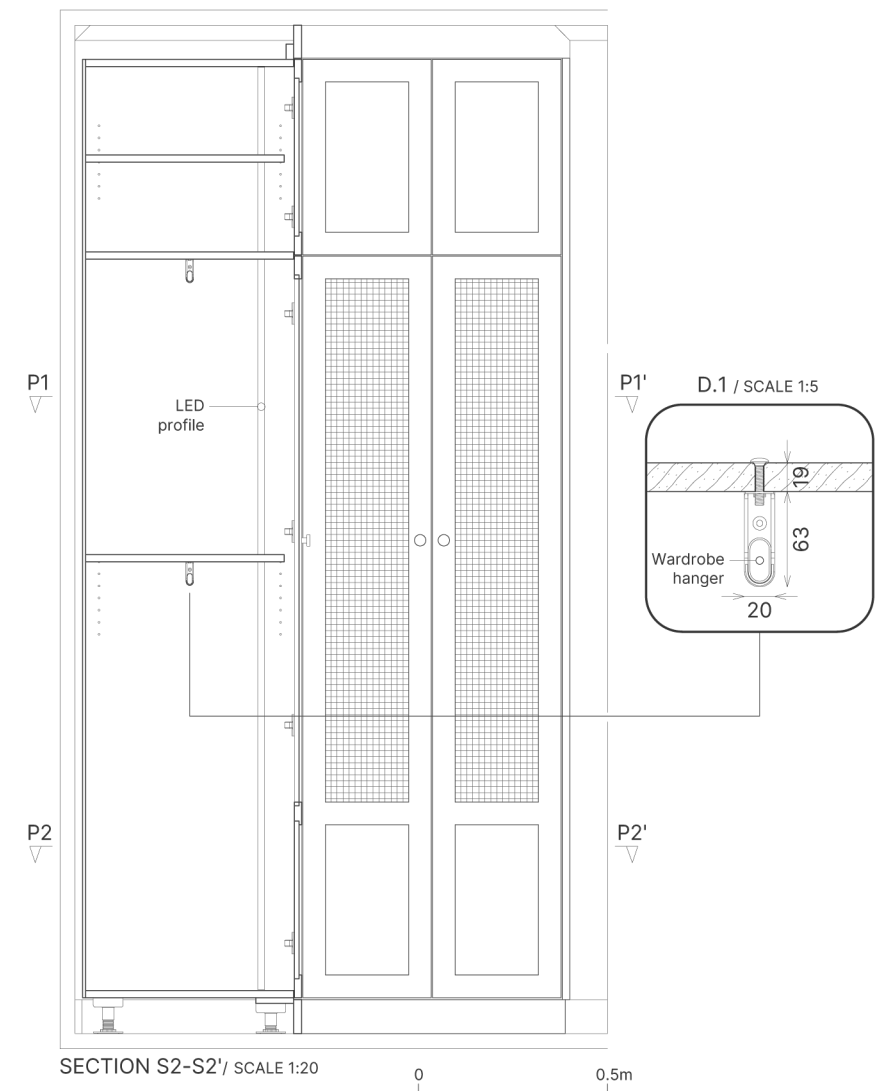
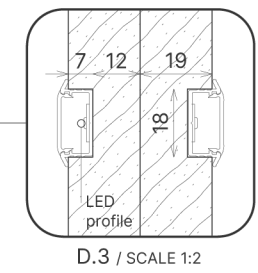
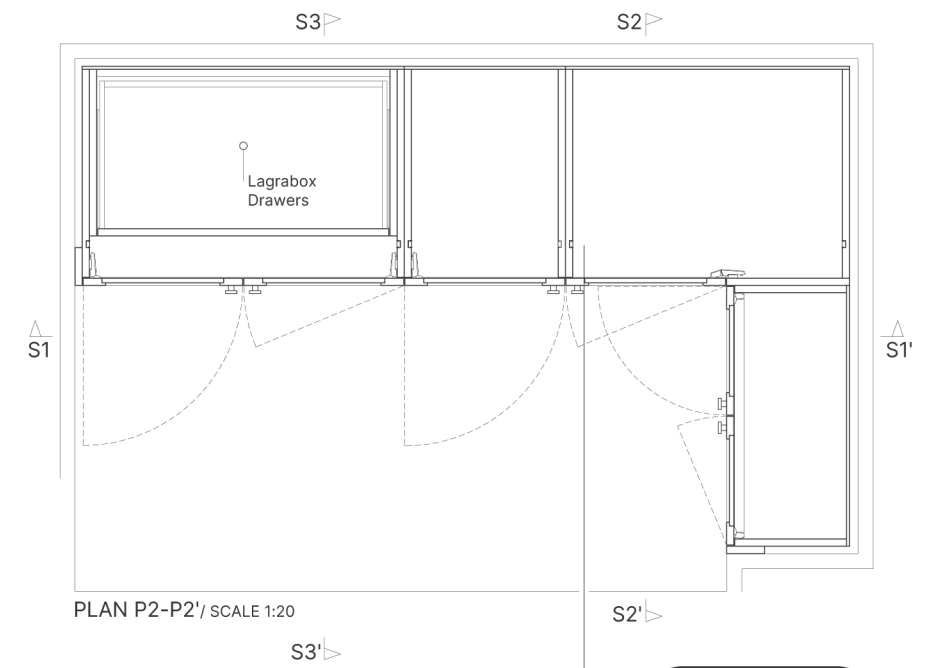
ACCESSORIES

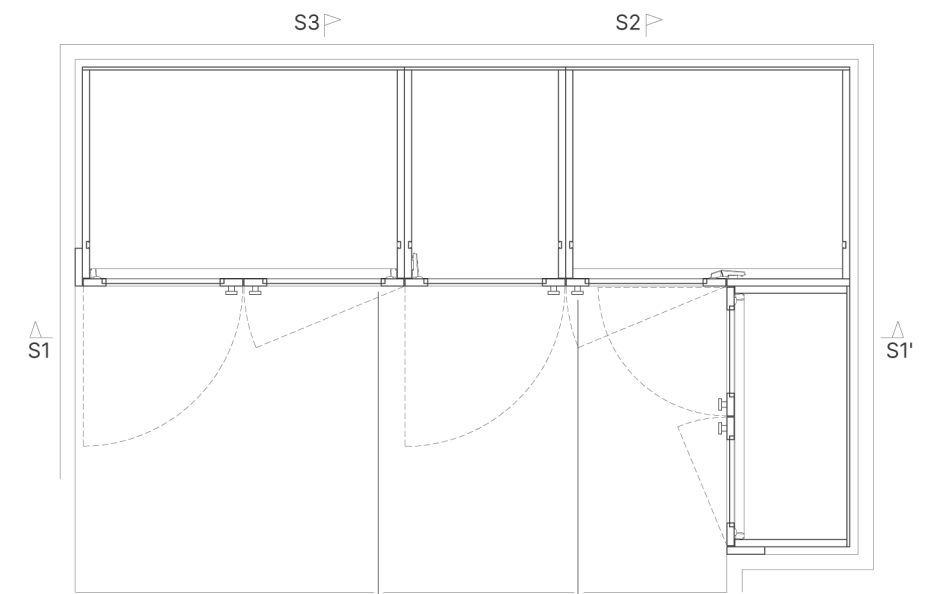
- x1 | 833.72.983 | Hafele Loox Profile 1190 for LED strip lights 10 mm
- x1 | LED stripe 230V, 3000K with opening/closing doors system
- x3 | BLUM Legrabox drawers, K type
- x2 | BLUM Legrabox drawers, M type

| | | | | | | 1:10 | 1:5 | 1:2 |
|-----------------------------------------------------------|--|--|--|--|--|------|-----|-----|
| MDP Chipboard Melamine white 19 / 8mm Finish (N.A) | | | | | | | | |
| MDF Waterproof 12 / 19mm Lacquered RAL 9003, matt | | | | | | | | |
| METAL Aluminium mm (N.A) Powercoated black, matt | | | | | | | | |
| | | | | | | | | |
| | | | | | | | | |
| | | | | | | | | |
| | | | | | | | | |
| | | | | | | | | |
| | | | | | | | | |
| | | | | | | | | |

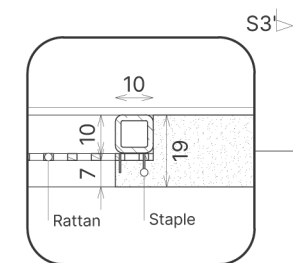


SECTION S3-S3' / SCALE 1:10

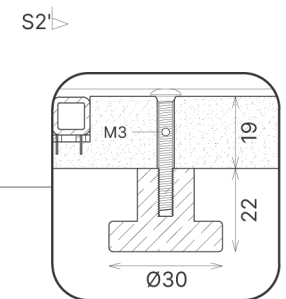




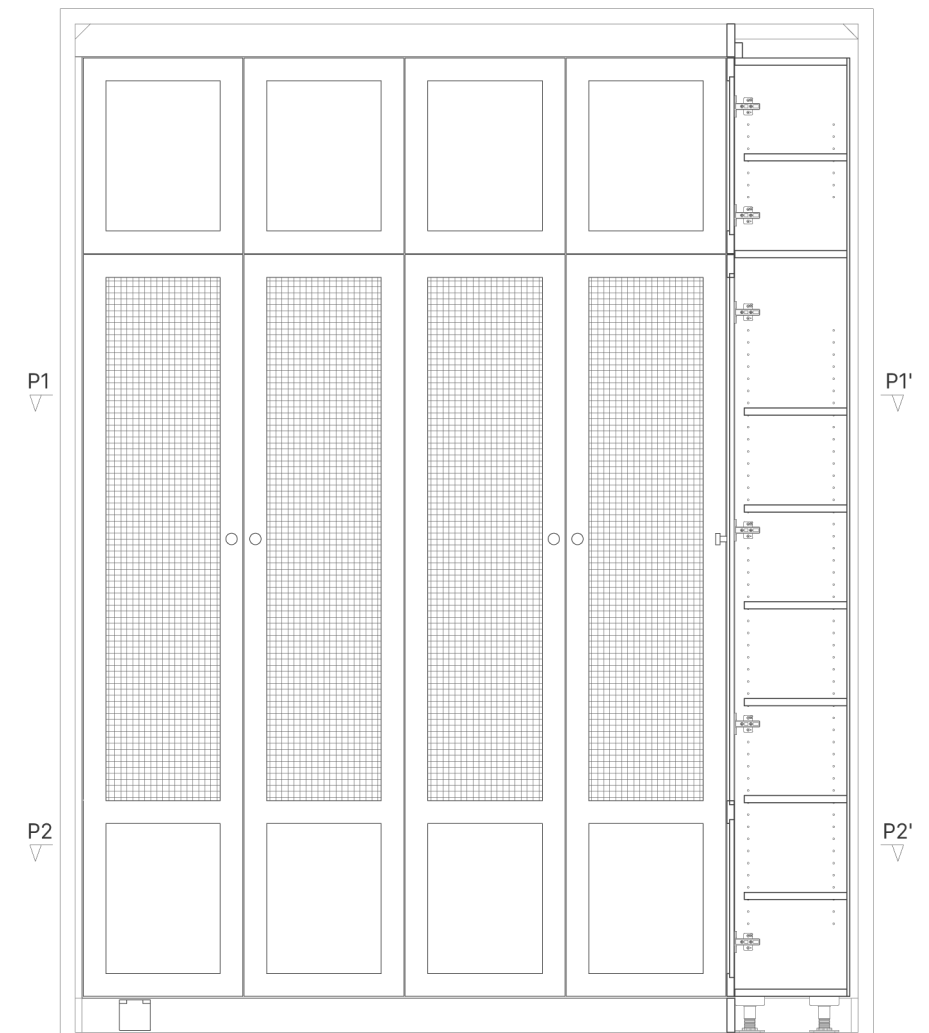
PLAN P1-P1' / SCALE 1:20



D.2 / SCALE 1:2



D.4 / SCALE 1:2



SECTION S1-S1' / SCALE 1:20

